



MCS-ACTUATOR

Description & Specifications



Part # **MCS-ACTUATOR**
(Replacement Actuator used on a Centrifugal)

Specifications

- 120 VAC
- Dynamic loads up to 3500N (787 lb)
- Static load capacity of 4500N (1012 lb)
- Maximum travel speeds - 14 in/min (6 mm/sec)
- 25% duty cycle
- Clevis-to-clevis mounting
- Self-locking
- Preset limit switches can be adjusted
- Potentiometer
- IP65 protection rating
- Steel extension tube and outer tube

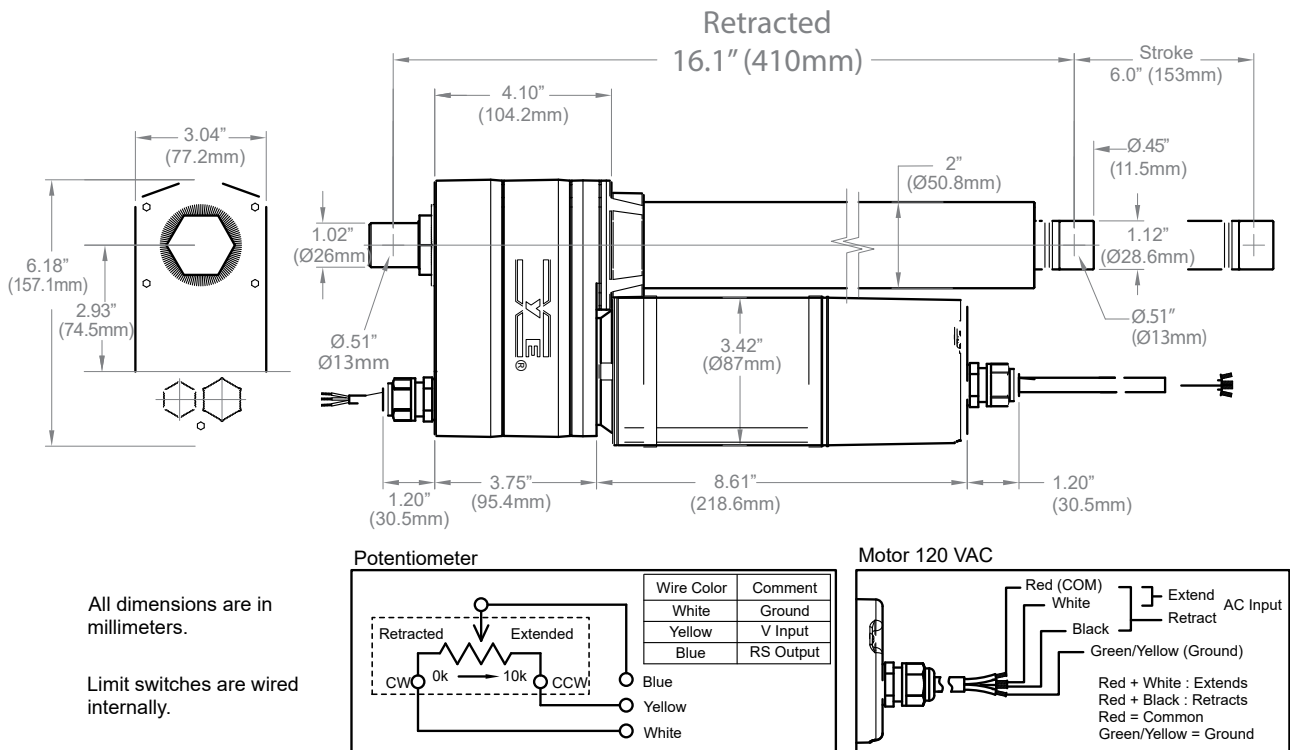
Packaging

Ship Weight 17 lb (approx)
Box Dimensions..... 20 x 7.5 x 6" (approx)

Description

The **MCS-ACTUATOR** is used in conjunction with MCS controls as a replacement for certain model stepper motor actuators.

This MCS Actuator operates as a 'pulse style open/close unit'.



All dimensions are in millimeters.

Limit switches are wired internally.